

The Messenger

St. Michael Lutheran Church



2012: The Year of the Bible



2012

**WORSHIP
SCHEDULE**
Sunday Mornings in
the Sanctuary

9:00 AM
10:45 AM

9:00 AM—*Sunday
School*

Sunday,
January 1, 2012
10 AM

Regular schedule
resumes January 8th

Inside this issue:

A Caring Community	2
Family & Youth	4
Worship/Music/ Community Events	5
Financial Report/ Council Updates	7
Our Mission & Vision	8

by Pastor John A. Mohan

Welcome to a new year and a new way of doing ministry together. To help us embrace the future, St. Michael will begin in 2012 highlighting an annual programmatic theme. Each year, we will develop one of the three components of our mission: to **praise** and **serve** God, and **make disciples** for Jesus. Beginning with discipleship, St. Michael will emphasize the Bible in 2012.

As a Lutheran church we belong to a tradition that places the Holy Bible at the center of faith. The Protestant Reformation began because of Martin Luther's hunger for God's Word and his passion for studying the scriptures. This hunger and passion is part of our DNA as Christians. Even our legal documents declare the Bible to be "the authoritative source and norm" of proclamation, faith, and life.

God's Word is our great heritage, but it is a heritage we barely even know. There is much to do here. Too many Christians are biblically ignorant. Cut off from God's Word, we can be lead into all sorts of dangerous territory—even within the Church.

I thank God for the worship of St. Michael that lifts up biblical preaching! I thank God for the Sunday School and Confirmation ministries of St. Michael that focus on biblical teaching! I thank God for the women's circles, the Blessed and Delivered and Financial Peace University small groups that faithfully study God's Word. I thank God for the Stepping Stones ministries that place Bibles into the hands of our young people. I thank God for the many other

ways we regularly lift up Holy Scripture as the source and norm of our life together, but I must also confess that it is not enough.

Too many times I find people uncomfortable using Scripture. Sometimes people are uncomfortable because of their unfamiliarity with God's Word. Sometimes people are uncomfortable because they don't want to hear what God has to say. No matter the cause, it seems we have lost our fluency if not the very language of faith.

I hope 2012 will move us dramatically toward being fluent in God's Word. Dream with me, for a moment, and consider what St. Michael would be like if...

- engaging Bible studies were offered and every member participated;
- preaching series taught the language of faith;
- Bibles throughout the facility had an invitation to be taken home instead of a warning that they should be left at church;
- special events celebrated the beauty and transforming nature of God's Word;
- new ministries were formed to include the Bible in the very structures of this congregation.

These are only modest goals compared to what God promises in the Holy Scriptures!

"(My Word) shall not return to me empty, but it shall accomplish that which I purpose, and succeed in the thing for which I sent it."

Isaiah 55:11

A Caring Community!

Notes from our Health Ministry—

Free health education classes are offered at Franklin Square Hospital Center throughout the year, including Alzheimer's Caregiver's Support Group, Diabetes Support Group and others. Most classes meet in the Crawford Conference Center. To register or for more information, please call 443-777-7900.

- **Widow & Widower Afternoon Series** meets Tuesdays from 1 to 3 PM, providing sharing, learning, fellowship and healing for both men and women, whether widowed for 20 years or 20 days. The next sessions will be January 17th, 24th & 31st.
- **Grief & Loss Monthly Support Group** meets the 4th Tuesday of each month from 6:30 to 8 PM for those dealing with the loss of a parent, sibling, spouse or friend, assisting participants in understanding the journey of grief and that they are not alone. This month's meeting will be January 24th.

Family to Family is a free 12-week course sponsored by NAMI (National Alliance on Mental Illness) for close relatives of those with severe mental illness, offering information on the clinical treatment of major mental illnesses and knowledge and coping skills needed by family members. Classes will be taught at three locations beginning in January. More info: www.nami.org/sites/nami/metrobaltimore or 410-435-2600.

For more information about St. Michael's Health Ministry, contact our Parish Nurse, Carolyn Kelly, 410-256-8921 or kellycarol2@msn.com.

Congratulations to proud grandparents Mark & Judy Reber who welcomed Emily Margaret Reber, 8 pounds, 1 ounce, 21 inches long, at 5 PM on November 29th. Baby Emily and parents Chris & Julie Reber are home and doing well.

To all at St. Michael:

Thank you so much for sharing the lovely altar flowers with me and my family. We truly enjoyed them and appreciate you thinking of us. Thank you again!

~Amy Hein



Dear Friends:

We would like to extend our heartfelt thanks for the use of your facilities for our Christmas Bazaar on Saturday, November 19th which was a great success. Enclosed is a check in the amount of \$50 as a small token of our appreciation. We are excited about the transformation of the nursing home into six neighborhoods. We are supporting this transformation by pledging to completely furnish the new kitchens in these neighborhoods. Proceeds from the Bazaar will certainly play a big part in helping us fulfill our commitment. We thank the Lord for continuing to guide Augsburg in enhancing the lives of his senior "children" and for the support of folks like yourselves.

~Sincerely, Mina K. Reiter
Corresponding Secretary

Augsburg Lutheran Home of Maryland Auxiliary

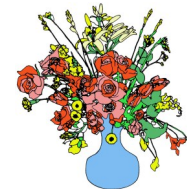
Dear St. Michael Church:

On behalf of the students, staff and parents of Sandy Plains Elementary School I would like to thank you for reaching out to our families this Thanksgiving. We appreciate your generosity on providing 75 chicken baskets for our less fortunate families. Thank you for your continued outreach. Please extend our heartfelt gratitude to all of your volunteers.

~Sincerely, Harry Walker
Principal

Note: St. Michael extends a big THANK YOU to Community Outreach, especially George Wagner and Norm Zellers, for coordinating the production and distribution of 600 food boxes at Thanksgiving and 723 boxes at Christmas for the less fortunate in our community.

Altar Flowers may be placed in honor or in memory of loved ones for \$21; you may take the flowers after the last service or leave them for delivery to our hospitalized or homebound members. Call Pat Chason, 410-583-8775.



To sponsor a bulletin please contact the church office, 410-256-6441 or office@stmichaelperryhall.org. Sponsorship is \$20 per Sunday, may be in memory or in honor of a loved one or special event, and partially defrays the cost of producing the bulletins.



A Caring Community!

Ministerial Acts

At the Grave

12-16-11 Sadie Crone

At the Font

11-27-11 Nathan James Barts, son of James Earl Barts & Nicole Michele Crispens

11-27-2011 Bryan Dawson Canapp, son of Gregory Bryan Canapp & Stacie Ann (Gallop) Canapp



Stewardship Bouquets—

God's Work, Our Hands

This month we say "Thanks!" to . . .

- . . . Dan Rowen, Tim Nelson, Cory Myers and Joe Bocklage for service above and beyond the call of duty helping custodian Joanne Myers strip and wax the Fellowship Hall last month after a chemical mishap and equipment failure;
- . . . all the children who did such a wonderful job of bringing to life the Christmas story through the play "Christmas Letters" at our Sunday School Christmas pageant during 10:45 worship on December 18th, and the adults who helped them.

. . . *Stewardship Bouquets are brief acknowledgements of significant service done by volunteer ministers at St. Michael. Would you like to send a bouquet?*

Forward your suggestions to barbharant@stmichaelperryhall.org.

"... there are varieties of activities, but it is the same God who activates all of them in everyone. To each is given the manifestation of the Spirit for the common good." (1 Cor. 12:6-7)

Save the Date to UN-Decorate! Help is needed to undecorate the Sanctuary on Saturday, January 14th at 9 AM. Ability/willingness to climb ladders greatly appreciated! More info: Terri Ward, 410-256-5509.

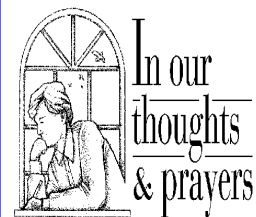
Cleaning for a Reason—Free housecleaning is offered once a month for 4 months to any woman undergoing chemotherapy simply by registering and having her doctor fax confirmation of treatment. For more info or to sign up, visit <http://www.cleaningforareason.org>.



Congratulations to . . .

. . . Daniel Breyse, French horn, and Kevin Roberts, trumpet, who were selected to perform in concert at Morgan State University in the All-State Senior Band & Orchestra Concerts, Sunday, February 26th (orchestra at 12:30 PM, band at 2).

Got news to share? Send notices to barbharant@stmichaelperryhall.org.

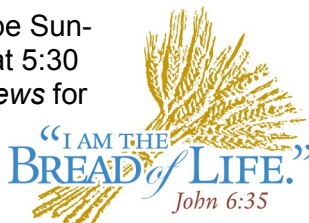


Please keep these members in prayer.

They would also appreciate a card or note of cheer. Current addresses may be obtained by calling the church office, 410-256-6441. George & Carolyn Belton; Walt & Erma Blucher; Jim Cloman, Marge Elloff; Stan & Lucille Kimmel; Irene Klausmier; Helen Koch;

William Mehle, Sr.; Miriam Milburn; Helen Miller; Betty Nixon; Estella Rye; Sallie Schauman; Al & Madaline Scrimger; Dot Tischler; Bud & Eleanor Yingling.

The next Bread of Life Potluck will be Sunday, January 15th beginning with dinner at 5:30 and program at 6:15. Watch the *Good News* for program details. To help with the meal, please contact Kay Asher, 410-671-9880 or hkasher@comcast.net.



Augsburg Auxiliary Cookbook

"Favorite Foods" is available for \$10 by calling Cheryl, 410-665-4884 or Emma, 410-592-8512. All cookbook sales benefit the Augsburg residents.

Do you have a new email address?

Please take a moment to help us stay in touch with you. Visit our website, www.stmichaelperryhall.org, click on "Get Email Updates" from the home page, and follow the simple prompts; call the church office, 410-256-6441, if you have any questions.

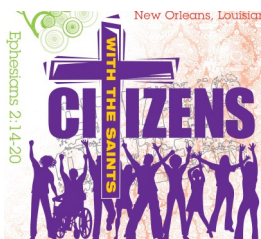


Family & Youth Ministries

From our Youth Minister~

Well, it's over for another year—the Christmas season goes by so fast. I hope everyone had a blessed holiday season. We have a busy month in January. We will be taking 18 middle school youth to the Jr. Quake retreat in Hunt Valley this month. We will also be taking 12 high school students to the Delaware-Maryland Synod retreat, "Roadtrip," in Ocean City this month. We are blessed that our youth programs continue to grow.

We are also counting the months until we attend the National Youth Gathering. St. Michael will have 25 youth and adults representing us in New Orleans this July. We would like to thank the members of the congregation for their support. It's still quite expensive to attend the Gathering so we will continue to do fundraising. Beginning this month, we will have a **pancake and sausage breakfast** the third Sunday of every month. The first one is January 15th. This breakfast will be held after each service and will be free. We only ask that you consider making a freewill offering to support the youth and adults who will be attending the Gathering. I will also be holding a monthly Bible study for the youth and adults that will be attending the Gathering to help get us ready for the week of service and worship in New Orleans. I'd like to invite anyone who's interested to attend these Bible studies to support our youth and maybe to experience a part of the Gathering here at home. Look for dates and times in the *Good News*. **Join us on Facebook** (search for *ELCA Gathering 2012: St Michael Youth*) for more information on the 2012 ELCA Youth Gathering: *Citizens With the Saints*.



On January 30th we will resume our Confirmation studies on Monday nights. We have finished the Old Testament and will begin our New Testament study. I'm looking forward to getting started again. We will also begin planning our Youth Service very soon. If you're interested in participating, please see me for more info.

~Peace, Ernie

For more information on St. Michael's Youth Ministries, please contact Ernie Lehr, 443-271-1119 or ernielehr3@verizon.net.

Sr. FLYP offers fellowship, fun and service to others for high school students (grades 9-12)

Our regular meetings are usually held the first and third Sundays of each month, starting in the Youth Room at 6:30 PM (ending at 8:30 PM). Because the first Sunday in January is New Year's Day, we'll skip that date and meet January 15th.

For more information on Sr. FLYP, contact Ernie Lehr: 443-271-1119, ernielehr3@verizon.net.



Confirmation News

St. Michael's Confirmation students continue their winter break through most of January. Beginning Monday, January 30th, classes resume with a new focus: the New Testament.

Pastor Mohan continues to produce video (PowerPoint) lessons for students who miss classes or are working independently. Copies of selected lessons are available from Pastor. Online access to the lessons has been delayed as we work to resolve bandwidth issues. We will announce when they are available.

Classes are offered most Monday evenings beginning at 7 PM. Students in grades 7 & 8 are encouraged to attend.

Schedule:

Jan. 30th—The Birth of Jesus & the Magi

Feb. 6th—The Wilderness Temptations

Feb. 13th—Jesus Calls the First Disciples



The God Squad is St. Michael's Middle School Youth Group offering students in grades 6, 7 & 8 fellowship and servant events to practice their

faith in fun and challenging ways. Laurie Schell will coordinate planning these events and invites parents to help! Contact her: laurie4320@aol.com, or 443-845-6263

Friday night **Rock & Bowl** at Perry Hall Lanes is planned for 9:30 PM on January 13th. Check the God Squad web page for more information and registration forms. Chaperones are needed for all events. Stay tuned for updates!

Worship/Music/Community Events

Notes from the Director of Music—

What a wonderful Advent and Christmas season filled with beautiful music! During this festive season we were blessed with wonderful music by the Cherub Choir, Psalters, Adult Choir, Contemporary Choir, Children's Chimes, and Bellaires. The singers, ringers, and directors invested a great deal of time into making this Holiday season joyous. I am also grateful for the hard work of the many instrumentalists that played throughout the season and on Christmas Eve.

We are still looking for more to join the music ministry, especially singers grades 2-6 as we begin working on the musical "Sermon on the Mound." Please come out and join us!

Contact Jeff Bunn: 410-256-6441 x18 or jeffbunn@stmichaelperryhall.org.

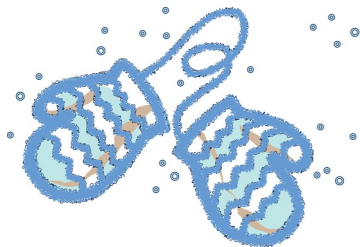


Worship Schedule Updates & Highlights—

- There will be one worship service at 10 AM on New Year's Day, Sunday, January 1st, with Lessons & Carols.
- We will celebrate the Epiphany of Our Lord Sunday, January 8th when our regular worship schedule resumes with services at 9 & 10:45 AM. Church Council members will be installed that day, and Sunday School resumes after a holiday break (no Sunday School classes Christmas Day or New Year's Day). Coffee with the Pastor, an orientation for those interested in membership, will be offered at 4 PM.
- January 15th we celebrate the Baptism of Our Lord. We will receive new members into the congregation during 9 AM worship. During 10:45 worship that day, we'll have a Baptismal Festival when all those who were baptized during 2011 are invited back for a special blessing and a gift from the congregation, a medalion engraved with their name and date of baptism. This is the first step of our Faith Stepping Stones ministry, which follows children from birth through high school graduation.



We hope you'll join us for these worship events!



Inclement Weather—Call the church office, 410-256-6441, for a recorded update if the weather is severe to learn if worship is cancelled. You may also visit our website, www.stmichaelperryhall.org, or tune in to WBAL radio (1090 AM) or WJZ-TV for weather-related closing information.

For weekday events, we follow Baltimore County Public Schools: if school was cancelled or dismissed early, our evening programming (choirs, Confirmation, etc.) is also cancelled, unless you are contacted by your group leader (choir director, mentor, etc.).



Faith Followers, our fellowship ministry for students in grades Kindergarten through 2, usually meets the third Sunday of each month from 6:30-7:30 p.m. Our next meeting

will be Sunday, January 15th. Contact Eve Bowmaster for more info: 410-256-8686 or ebowmaster@comcast.net.

EI. FLYP (Elementary Fellowship of Lutheran Young People) usually meets the third Sunday of each month from 4-5:30 p.m. in the Fellowship Hall. All children in grades 3, 4 & 5 are welcome. Our next meeting will be Sunday, January 15th. More info: Julie Kirsch, 410-529-3019 or cjkirsch@hotmail.com.

Community Events

Free Bach Concert will be at Christ Lutheran Church, 701 S. Charles St., 21230, on Sunday, January 1st at 4 PM, featuring Badinerie from Suite #2 for Strings, Cantata #16, and Cello Suite #1 in G major. Another concert will be presented February 5th. More information: www.bachinbaltimore.org.

Epiphany Celebration, featuring roast pork dinner (\$10 for adults, no charge for children 15 and under) and Festival Candlelight Holy Communion worship with guest preacher Kristin Dusby, will be Friday, January 6th at 6 PM at Epiphany Lutheran Church, 4301 Raspe Avenue, 21206. More info: 410-485-7654, www.God-Is-Love.org.



Events



Bus Trips

Scheduled for 2012 (to date):

March 28—Back roads of Lancaster with meal at an Amish home, \$72.

April 11—Sight & Sound for new show “Jonah” with meal at Family Cupboard, \$92. *Only 10 seats left!*

May 16—American Music Theater for “Country Classics” with meal at Shady Maple, \$74.

June 6—Totem Pole Theater for “Chaps” with meal at Hickory Bridge Farm, \$80.

June 17-23—Mackinac Island, MI; call for flyer. *Reservations must be made by February 1st!*

July 25—Rainbow Dinner Theater for comedy “Things My Mother Taught Me,” \$73.

September 27—Dutch Apple Dinner Theater for Church Basement Ladies sequel, \$80.

November 15—Allenberry Playhouse for their Christmas show, \$85.

Please call Emma Hahn, 410-592-8512, for reservations and trip details.



Loving Hearts Caring Hands

Bible Study—The Bible Study from *Gather* for September, 2011 through May, 2012 is “To Follow and To Serve: The Gospel of Mark.” This year’s theme verse is “Take heart, get up, Jesus is calling you” *Mark 10:49b*. The January session is “Tough Questions” based on Mark 10-11.

All are welcome to participate in one of these circles:

Monday Morning Circle

Date: January 9
Time: 10:00 a.m.
Location: Church Parlor
Leader: Emma Hahn

Tuesday Morning Circle

Dates: January 3
Time: 10:00 a.m.
Location: Church Parlor
Leaders: D. House/G. Diegel

Thursday Morning Circle

Date: January 12
Time: 10:00 a.m.
Location: Church Parlor
Leader: Emma Barzyk

Saturday, January 21, 2012 will be the Annual Day of Renewal Service to be held at St. Peter’s Lutheran, 7910 Belair Road at the Beltway, Fullerton. The program is from 8:45 AM to 1:30 PM with “Loose Ends,” presented by Rev. Sandra Alexis from St. Andrew’s, Taylor Avenue. Rev. Alexis will also lead worship with Holy Communion. Bring a sandwich; soup, beverage and dessert will be provided. An offering will be collected and shared: 50% to Women of the ELCA, 25% to St. Peter’s Food Project, and 25% to ELCA Malaria Project. Please also bring a donation of non-perishable food for St. Peter’s Food Pantry. Register with Emma Hahn by January 14th.

For more information on these or any of the ministries of the Women of the Church, please call Emma Hahn, 410-592-8512.



New Year’s Family Celebration at Mar-Lu-Ridge will be Friday, December 30 through Sunday, January 1. \$85 for adults, \$65 for children 3-9, or a family-of-4—maximum of \$300 includes housing in fully heated cabins with refurbished private full baths, all meals, square dancing, campfire with marshmallow roast and songs, crafts, hiking, zip line and/or snow tubing (weather permitting) ping pong, cards, scavenger hunt, trivia contest, worship, New Year’s Eve buffet

and family game night, New Year’s Day brunch and bingo, and closing worship. Mar-Lu-Ridge Conference & Educational Center is at 3200 Mar-Lu-Ridge Road, Jefferson, MD 21755, and strives to offer a mountaintop experience to change lives, make disciples, and build friendships and Christian community. Register/info: www.mar-lu-ridge.org, mlr@mar-lu-ridge.org, or 301-874-5544.

CHURCH  COUNCIL

St. Michael's Congregation Council considered/acted upon the following items at its December meeting:

- Received updates from pastors and team leaders.
- Received November's Treasurer's Report showing monthly income was \$3,682 below budget while expenses were \$1,984 above budget. For the year, income is \$20,643 above budget (due to a bequest), while expenses are \$3,383 below budget.
- Received update from the Building Team. A roofing firm declined to make temporary repairs to the Chapel stating the repairs would be a waste of money. The team then met with a renovation firm to receive another proposal for repairs. The team will continue to gather information until a funding plan is in place.
- Received an update from the ELCA study group and authorized the group to publish their report in the January *Messenger*.
- Approved in principle offering part-time employees voluntary salary reduction agreements through 403(b) investment options. Final approval awaits a congregational plan that conforms to IRS regulations.
- Elected the 2012 Executive Team and invited Council members to indicate preferences for team assignments. The new Executive Team includes Mark Ermer (president), Lara Kopf (vice president), Janet Loudermilk (secretary), Jim Erbe (treasurer), and John Marley (financial secretary).

ELCA and St. Michael

by Pastor John A. Mohan

The 2009 ELCA Churchwide Assembly adopted a social statement on human sexuality as well as changes to the church's ministry policies that allow homosexuals in committed relationships to serve as pastors and other rostered leaders. These decisions have proved controversial and challenging to many congregations since they draw out strong emotions (both in favor and against).

In order for St. Michael to effectively pursue its mission and carefully respond to the actions of the ELCA, I asked four members to advise me on the impact of these decisions for our congregation. During this past year we have met often and the results

of those meetings are presented in the attached report.

I want to take this opportunity to thank Pat Chason, Jesse House, Lara Kopf, and Ron Rye for their advice. It is difficult to discuss such charged issues, yet our group faithfully followed St. Paul's injunction to "speak the truth in love" (Ephesians 4:15). Whatever the future holds, St. Michael will continue to do our best to love the Lord and build up the body of Christ.

Please see the insert "ELCA Study Group Annual Report," included with this Messenger, for a summary of the group's activities and the results of their survey.



Treasurer's Report

November, 2011	Current Month		Year to Date	
	Actual	Budget	Actual	Budget
Income	\$35,264	\$38,946	\$445,328	\$424,684
Expense	\$40,292	\$38,308	\$393,693	\$397,238
Surplus (Deficit)	(5,029)\$	\$638	\$11,342	(\$12,685)
Deficit Carryover			(\$66,893)	
Combined Deficit			(\$55,552)	

Mar-Lu-Ridge Saturday Retreat

Series takes a winter break and resumes this spring with "Becoming Who You Are: Exploring the Fruits of the Spirit," a Lenten retreat, with presenter Dr. Tom Williamsen, composer and pastor. Retreat is offered March 10, 2012 from 9:30 AM to 3 PM; \$30 includes lunch. Register: 800-238-9974 or MLR@Mar-Lu-Ridge.org.

Our Mission and Vision

The mission of St. Michael Lutheran Church is to praise and serve God and make disciples for Jesus.

The vision of St. Michael Lutheran Church is to be a Christ-centered, welcoming community of active, compassionate, Spirit-filled disciples, working in harmony to spread the Word of God.

The Messenger

Published monthly by
St. Michael Lutheran Church
9534 Belair Road
Baltimore, MD 21236-1508
410-256-6441 (Office)
410-256-7081 (Fax)
www.stmichaelperryhall.org
office@stmichaelperryhall.org

SUPPORT STAFF

Barbara A. SanBoeuf
Office Manager
barbsanboeuf@stmichaelperryhall.org

Barbara L. Harant
Communications Assistant
barbharant@stmichaelperryhall.org

Joanne Myers
Custodian
jojos6@comcast.net

PROGRAM STAFF

John A. Mohan
Lead Pastor
pastorjohnmohan@stmichaelperryhall.org

Bruce M. Kelley
Pastor
pastorbrucekelley@stmichaelperryhall.org

Wm. Jeffrey Bunn
Director of Music
jeffbunn@stmichaelperryhall.org

MESSENGER STAFF

Norma Allred, Publisher
Barbara L. Harant, Editor
barbharant@stmichaelperryhall.org

COUNCIL EXECUTIVE TEAM

Mark Ermer, President
m_ermer@comcast.net

Lara Kopf, Vice-President
Lara.kopf@gmail.com

Janet Loudermilk, Secretary
janetloudermilk@comcast.net

Jim Erbe, Treasurer
jrerbe@yahoo.com

John Marley, Financial Secretary
johnjmarley0608@verizon.net



**Deadline for the
February Messenger is
Tuesday, January 10th.**



Email Updates
Visit our website,
www.stmichaelperryhall.org,
and click "Get Email Updates!"



*St. Michael
Lutheran Church*

9534 Belair Road
Baltimore, MD 21236-1508
Phone: 410-256-6441
Fax: 410-256-7081
E-mail: barbharant@verizon.net

**Sunday Worship:
9 & 10:45 AM
Sunday School: 9 AM**

**Look for us on the web:
www.stmichaelperryhall.org**

Place label to
completely cover this box;
do not write below barcode