

# The Messenger

St. Michael Lutheran Church



December  
**2011**

**WORSHIP  
SCHEDULE**  
Sunday Mornings in  
the Sanctuary

9:00 AM  
10:45 AM

9:00 AM—*Sunday  
School*

**Christmas Eve  
Worship**

**Saturday,  
December 24<sup>th</sup>  
11 AM  
4, 7 & 9 PM**

## Inside this issue:

A Caring Community	2
Family & Youth	4
Worship/Music/ Community Events	5
Financial Report/ Council Updates	7
Our Mission & Vision	8

## Bad News, Good News

by **Pastor John A. Mohan**

Our Advent theme this year is “The Lord is Near.” In choosing it, I was conscious of how it might sound to others. Is it good news, or bad news?

The Bible shows this ambivalence as well. Throughout the Old Testament, the news that “The Lord is Near” was often received differently by different people. For those who ignored God, who put off the call for righteous repentance, the news was a dire warning. Consider Joel 1:15: “Alas for the day! For the day of the Lord is near, and as destruction from the Almighty it comes.”

But then again, for those who are suffering, who felt the weight of trouble and the pain of injustice, the news sounded sweet. Consider Psalm 34:18: “The Lord is near to the brokenhearted, and saves the crushed in spirit.”

So, how does Advent sound to you? The Lord is Near!

If you are like me, I hear both warning and words of comfort. The Lord knows my house (life) could be put into better order and I am not as prepared as I would like to be. It takes a bit of work for me to hear this message as “Good News.” But that is what God intends.

God has certainly demonstrated faithfulness. From the very beginning, God has sought to give humankind every blessing. God’s purpose for us has al-

ways been life! But with sin, our rejection of God’s purposes, we have made a mess of our lives. With strange persistence, we continue to think we know best. But God has not given up on us.

Instead, God has sought time and again to reach us with his gracious Word. Finally, when the time was right, God found the way.

Speaking our language, living as we do, vulnerable like no other god, the Word came to us in Bethlehem. In the most unbelievable of circumstances, the Lord came near.

In Jesus of Nazareth, God reveals himself as he wants to be known. In him, God forgives our sins and calls us to righteousness. In him, God defeats Satan and leads us to new life. In him, God destroys death and opens the gates to eternal life.

As we prepare for Christmas in the year of our Lord 2011, we can trust and live as though God has brought us the best of news. Jesus Christ was born for you. Jesus Christ has died for you. Jesus Christ was raised for you. This is good news!

Consider Philippians 4:4-5: “Rejoice in The Lord always; again I will say, Rejoice. Let your gentleness be known to everyone. The Lord is near.”

Happy Advent, and a very Merry Christmas!



## A Caring Community!

### Notes from our Health Ministry—

**Free health education classes** are offered at Franklin Square Hospital Center throughout the year, including Alzheimer's Caregiver's Support Group, Diabetes Support Group and others. Most classes meet in the Crawford Conference Center. To register or for more information, please call 443-777-7900.

**Widow & Widower Afternoon Series** meets Tuesdays from 1 to 3 PM, providing sharing, learning, fellowship and healing for both men and women, whether widowed for 20 years or 20 days.

**Grief & Loss Monthly Support Group** meets the 4<sup>th</sup> Tuesday of each month from 6:30 to 8 PM for those dealing with the loss of a parent, sibling, spouse or friend, assisting participants in understanding the journey of grief and that they are not alone.

**Christmas Service for the Bereaved** will be Saturday, December 10<sup>th</sup> from 3 to 5 PM in the Kotzen Auditorium at Franklin Square Hospital Center. This ecumenical service is for all who are grieving and will include a reading of names, carols, and Holy Communion, with special music by O.J. Spikes. The service is provided by the Pastoral Care Department and Parish Nurse Program of Franklin Square, is free, and all are welcome. A reception follows.

**Family to Family** is a free 12-week course sponsored by NAMI (National Alliance on Mental Illness) for close relatives of those with severe mental illness, offering information on the clinical treatment of major mental illnesses and knowledge and coping skills needed by family members. Classes will be taught at three locations beginning in January. More info: [www.nami.org/sites/nami/metrobaltimore](http://www.nami.org/sites/nami/metrobaltimore) or 410-435-2600.

**For more information about St. Michael's Health Ministry, contact our Parish Nurse, Carolyn Kelly, 410-256-8921 or [kellycarol2@msn.com](mailto:kellycarol2@msn.com).**

To the People of St. Michael:

A BIG thank you to all the volunteers and staff who helped make our Oktoberfest another successful, fun event. We got a lot of buzz from the community, and it was all positive! And we raised almost \$2000 to support our critically needed programming and ministries. Thank you! It is such a blessing to work with you all. It helps remind me every day that God is alive – and he certainly is at St. Michael.



~Claudia Morrell

Dear St. Michael Friends:

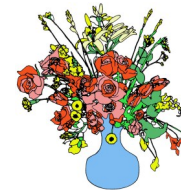
Thank you for the lovely altar flowers. I find so much comfort from my visits by Pastors Kelley and Mohan. The ovarian cancer has metastasized to my lungs. At this time I am clinically stable; I've started a new chemo treatment and we are praying for good results. Thank you for all your thoughts and prayers.

~Kathy Fazio

**Cleaning for a Reason**—Free housecleaning is offered once a month for 4 months to any woman undergoing chemotherapy simply by registering and having her doctor fax confirmation of treatment. For more info or to sign up, visit <http://www.cleaningforareason.org>.



**Altar Flowers** may be placed in honor or in memory of loved ones for \$21; you may take the flowers after the last service or leave them for delivery to our hospitalized or homebound members. Call Pat Chason, 410-583-8775.



**To sponsor a bulletin** please contact the church office, 410-256-6441 or [office@stmichaelperryhall.org](mailto:office@stmichaelperryhall.org). Sponsorship is \$20 per Sunday, may be in memory or in honor of a loved one or special event, and partially defrays the cost of producing the bulletins.



### Congratulations to . . .

. . . Daniel Breyse, Brittany Deitrich, Kevin Roberts, Andrew Utz & Caroline Wille, who played as members of the Baltimore County Public Schools All-County Honor Band in concert at the Meyerhoff Symphony Hall Monday, November 7<sup>th</sup>.

Got news to share? Send notices to [barbharant@stmichaelperryhall.org](mailto:barbharant@stmichaelperryhall.org).

**A Caring Community!**

**Ministerial Acts**

**At the Grave**

- 10-22-11 Doris Thomas
- 11-17-11 Albert Anglin, Sr.



**At the Font**

- 10-22-11 William Benjamin Maskell, son of Scott Raymond & Catheryne (Proulx) Maskell

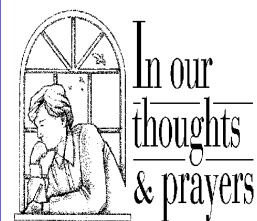
**Save the Date to Decorate!** Help is needed to decorate the Sanctuary for Advent and Christmas on Saturday, December 3<sup>rd</sup> at 9 AM. Ability/willingness to climb ladders greatly appreciated! More info: Emma Barzyk, 410-256-5910.

**Chapel and Organ Renovation** funding has been under discussion by an ad hoc team for several months. They're asking for your input in the form of a survey included with this *Messenger*. Please place your completed survey in the box in the narthex or mail it back. More info: Mark Ermer, 410-256-0867 or [m\\_ermer@comcast.net](mailto:m_ermer@comcast.net).



**Church Council Elections** were held Sunday, November 6<sup>th</sup> after each service. These members were elected to represent you at Council meetings beginning in January: Derek Blackner (Youth Representative), Kim Burton, Tracy Garappolo, Janet Loudermilk, and John Marley.

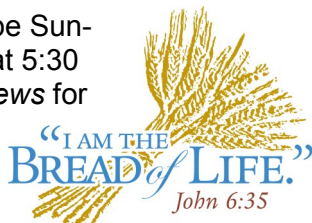
**Annual Congregational Meeting** was held Sunday, November 20<sup>th</sup>. Copies of the Annual Report, including the 2012 budget, are available in the church office.



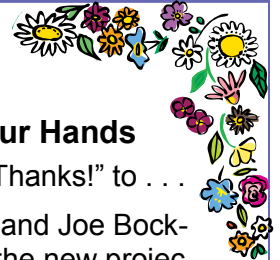
**Please keep these homebound members in prayer.** They would also appreciate a card or note of cheer. Current addresses may be obtained by calling the church office, 410-256-6441. George & Carolyn Belton; Sadie Crone; Helen Koch; William Mehle, Sr.; Helen Miller; Betty Nixon;

Sallie Schauman; Al & Madaline Scrimger; Dot Tischler; Bud & Eleanor Yingling.

**The next Bread of Life Potluck** will be Sunday, January 15<sup>th</sup> beginning with dinner at 5:30 and program at 6:15. Watch the *Good News* for program details. To help with the meal, please contact Kay Asher, 410-671-9880 or [hkasher@comcast.net](mailto:hkasher@comcast.net).



**Stewardship Bouquets—**



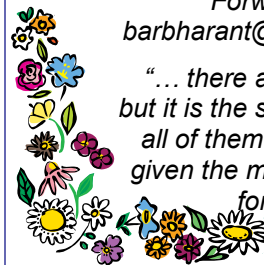
**God's Work, Our Hands**

This month we say "Thanks!" to . . .

- . . . Joanne Myers and Joe Bocklage for hanging the new projection screen in the Quilters Room;
- . . . Emma Barzyk for cleaning mouse "gifts" from our candles and candleholders to make them ready for Christmas Eve;
- . . . Kay Asher and her team for setting up, providing, and cleaning up after lunch for the Annual Meeting;

*Stewardship Bouquets are brief acknowledgements of significant service done by volunteer ministers at St. Michael. Would you like to send a bouquet?*

Forward your suggestions to [barbharant@stmichaelperryhall.org](mailto:barbharant@stmichaelperryhall.org).



*"... there are varieties of activities, but it is the same God who activates all of them in everyone. To each is given the manifestation of the Spirit for the common good." (1 Cor. 12:6-7)*

**Augsburg Auxiliary Cookbook**

"Favorite Foods" is available for \$10 by calling Cheryl, 410-665-4884 or Emma, 410-592-8512. All cookbook sales benefit the Augsburg residents.

**Christmas Tea will not be held** this year. Please update your calendar.

**Do you have a new email address?**

Please take a moment to help us stay in touch with you. Visit our website, [www.stmichaelperryhall.org](http://www.stmichaelperryhall.org), click on "Get Email Updates" from the home page, and follow the simple prompts; call the church office, 410-256-6441, if you have any questions.



## Family & Youth Ministries

### *From our Youth Minister~*

Well, we made it through homeless night. On Saturday, November 5<sup>th</sup> there were 20 middle and high school students sleeping outside St Michael. It sure was cold—I heard it got down into the 20s that night. Thanks to this congregation for your support and generosity in blessing us with donations of food and drinks, as well as clothing, blankets, coats, sheets, and other new and used items that we delivered to the Eastern Day Shelter, a family shelter near Franklin Square Hospital. Our youth learned valuable lessons that cold night, including compassion for others and being thankful for the blessings in their own lives.

I enjoy Christmas, all of it, the shopping, carols, worship, food, fellowship, and craziness. I really enjoy worship; I just don't get to attend worship as much as I'd like. There are some special services I really look forward to. Christmas Eve is one of them. As I was writing this, I happened to be surfing the internet looking at Christmas things. I saw a page that said "Keep Christ in Christmas," and I wondered how many families were guilty of leaving Christ out of Christmas. As I think about it, all of our traditions, as well as our faith, are what keep Him there. Attending worship as a family, Christmas dinner, presents and decorations—all these are part of our traditions, our way of marking the occasion and remembering. I searched more to see if I could equate any of our traditions with our faith. Unfortunately, a lot of our traditions come from ancient pagan rituals, not something I want to share. I did, however, find two things I thought were important. One was the crèche or nativity scene. Obviously that's a reminder of our faith and a remembrance of Christ's birth. Nativity scenes are so interesting: Mary, Joseph and the Christ child; some have shepherds, animals and angels. Some are large and some are small, but they're all clean, really clean! I don't think it was that way on that night so long ago. The innkeeper didn't have room, so he allowed Mary and Joseph the only shelter he had: a stable, dark, filthy and smelly, with hay, most likely unclean water, animals, and that stuff that all animals leave on the floor of their homes. This is where our Savior came into the world, not in a palace or in a glowing ray of light, but in a stable. It shows the humanity of it all and foreshadows the job Jesus came here to do. He came to get dirty, to teach us to love one another and to take away our sins, a dirty job that Mike Rowe could never pull off! Then I read that in the "old days" people put candles or lights in their windows to welcome travelers, letting them know that there was room for them inside.

This year when we decorate at my house, I'm going to pay special attention to the candles in my window and I'm going to throw a little dirt in my crèche. I want Christ to know that I remember, and that there's always room for Him at my home. "Keep Christ in Christmas" the internet page said. I'm not sure He ever left.  
*Merry CHRISTmas!* ~Peace, Ernie



### Confirmation News

Our holiday recess will begin mid-December as we turn our focus to celebrating Christ's birth. We will finish our study of the Old Testament on December 12<sup>th</sup>. We will begin studying the New Testament when we return January 30<sup>th</sup>.

Lesson video reviews will soon be available. Pastor Mohan has begun recording the PowerPoint lessons for students who miss classes or are working independently. Online access to the lessons has been delayed as we work to resolve bandwidth issues. We will announce when they are available.

Classes are offered most Monday evenings beginning at 7 p.m. Students in grades 7 & 8 are encouraged to attend.

#### Schedule:

Dec. 5 — *Exile and Return*

Dec. 12 — *Prophets of Israel & Judah*

Jan. 30 — *The Birth of Jesus & the Magi*



**The God Squad** is St. Michael's Middle School Youth Group offering students in grades 6, 7 & 8 fellowship and servant events to practice their

faith in fun and challenging ways. Laurie Schell will coordinate planning these events and invites parents to help! Contact her: [laurie4320@aol.com](mailto:laurie4320@aol.com), or 443-845-6263

Friday night **Rock & Bowl** at Perry Hall Lanes is planned for January 13<sup>th</sup>. Check the God Squad web page for more information and registration forms. Chaperones are needed for all events. Stay tuned for updates!

**All choirs are in full swing**—Please join us, there's room for more!

**Psalters** (grades 2-6): Tuesdays from 6 to 6:45 PM in the Choir Room. We'd especially enjoy welcoming more Psalters, as we're doing a musical, *Sermon on the Mound* (baseball theme, not a typo!) this spring.

**Children's Chimes:** Tuesdays, 6:45 to 7:30 PM in the Sanctuary.

**Cherubs** (Pre-K through grade 1): Sundays in the Choir Room at 10:15 AM.

**Contemporary Choir:** Tuesdays at 7:30 p.m. in the Sanctuary.

**Adult Choir:** Wednesdays at 7:30 p.m. in the Choir Room. Join us just for Christmas if you don't have time for a year-round commitment.

**Bellaire:** Mondays at 7 PM in the Sanctuary (subs needed).

**We are looking for guitarists** to play occasionally at the 10:45 service with the Contemporary group. Please contact Jeff Bunn: [jeffbunn@stmichaelperryhall.org](mailto:jeffbunn@stmichaelperryhall.org) or 410-256-6441 x18.



## Community Events

**Christmas Cookie Packing** for Lutheran Mission Society (LMS) will be at LMS Headquarters, 601 Hammonds Lane, 21225 Friday, December 2<sup>nd</sup> at 9 AM; or bake and donate cookies before 9 AM on Dec. 2<sup>nd</sup>. More info: 410-636-0123.

**Free Bach Concert** will be at Christ Lutheran Church, 701 S. Charles St., 21230 Sunday, December 4<sup>th</sup> at 4 PM, featuring Cantata 36 (*Schwungt freudig euch empor*) and Prelude and Fugue in E minor with guest choirs Eightnotes and Vocal Chords from Park School. Another concert will be presented Sunday, January 1<sup>st</sup> at 4 PM featuring Badinerie from Suite #2 for Strings, Cantata #16, and Cello Suite #1 in G major. More information: [www.bachinbaltimore.org](http://www.bachinbaltimore.org).

**Community Events**



**Rejoice and Be Merry** is the free concert to be presented by the Bel Air Community Chorus Sunday, December 4<sup>th</sup> at 7 PM in the Bel Air High School Auditorium, 100 Heighe St., 21014, featuring The Chancel Chimers handbell choir and St. Michael's own Shirley Reeves. More info: [www.BACCSings.weebly.com](http://www.BACCSings.weebly.com) or 443-752-6555.

**Christmas Bazaar** at St. Andrew Lutheran, 1201 Taylor Avenue, 21234, will be Saturday, December 10<sup>th</sup> from 9 AM to 1 PM, with crafts, wreaths and live arrangements, homemade candy and a Kids Only Shoppe. More info: 410-825-3155 or [www.lutheranonline.com/standrewparkville](http://www.lutheranonline.com/standrewparkville).

**Free Christmas Concert** by Hamilton Women's Ensemble with guest harpist will be Saturday, December 10<sup>th</sup> at 7 PM at Hamilton Presbyterian Church, 5532 Harford Road, 21214. More information: Gail Jothen, 410-592-2626.



**Faith Followers**, our fellowship ministry for students in grades Kindergarten through 2, usually meets the third Sunday of each month from 6:30-7:30 p.m. Our next meeting

will be Sunday, December 18<sup>th</sup>. Contact Eve Bowmaster for more info: 410-256-8686 or [ebowmaster@comcast.net](mailto:ebowmaster@comcast.net).

**EI. FLYP** (Elementary Fellowship of Lutheran Young People) usually meets the third Sunday of each month from 4-5:30 p.m. in the Fellowship Hall. All children in grades 3, 4 & 5 are welcome. Our next meeting will be Sunday, December 18<sup>th</sup>. More info: Julie Kirsch, 410-529-3019 or [cjkirsch@hotmail.com](mailto:cjkirsch@hotmail.com).

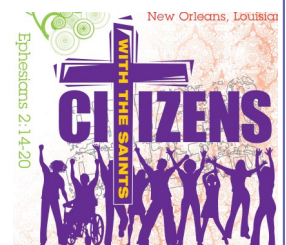
## Sr. FLYP offers fellowship, fun and service to others for high school students (grades 9-12)

**Our regular** meetings are held the first and third Sundays of each month, starting in the Youth Room at 6:30 PM (ending at 8:30 PM). December's dates are the 4<sup>th</sup> and 18<sup>th</sup>.

**Youth Gathering participants**—planning and fundraising are ongoing. Current information is available by contacting Mr. Ernie.

For more information on Sr. FLYP, contact Ernie Lehr: 443-271-1119, [ernielehr3@verizon.net](mailto:ernielehr3@verizon.net).

**Join us on Facebook** (search for *ELCA Gathering 2012: St Michael Youth*) or contact Ernie Lehr for more information on the 2012 ELCA Youth Gathering: *Citizens With the Saints*.





## Bus Trips

### Scheduled for 2012 (to date):

**March 28**—Back roads of Lancaster with meal at an Amish home, \$72.

**April 11**—Sight & Sound for new show “Jonah” with meal at Family Cupboard, \$92.

**May 16**—American Music Theater for “Country Classics” with meal at Shady Maple, \$74.

**June 6**—Totem Pole Theater for “Chaps” with meal at Hickory Bridge Farm, \$80.

**June 17-23**—Mackinac Island, MI; call for flyer. Reservations must be made by first of February.

**July 25**—Rainbow Dinner Theater for comedy “Things My Mother Taught Me,” \$73.

**September 27**—Dutch Apple Dinner Theater for Church Basement Ladies sequel, \$80.

**November 15**—Allenberry Playhouse for their Christmas show, \$85.

**Please call** Emma Hahn, 410-592-8512, for reservations and trip details.



## Loving Hearts Caring Hands

**Bible Study**—The Bible Study from *Gather* for September, 2011 through May, 2012 is “To Follow and To Serve: The Gospel of Mark.” This year’s theme verse is “Take heart, get up, Jesus is calling you” *Mark 10:49b*. The December

session is “Beyond the Boundaries” with theme verse, “How many loaves have you? Go and see” *Mark 6:38*. This session explores Jesus’ power over hunger, storm, demons, and infirmity. His travels take him far from home. Learn how Jesus’ ministry extends to Gentiles as well as Jews.

All are welcome to participate in one of these circles:

### Monday Morning Circle

Date: December 12  
Time: 10:00 a.m.  
Location: Church Parlor  
Leader: Emma Hahn

### Tuesday Morning Circle

Dates: December 6  
Time: 10:00 a.m.  
Location: Church Parlor  
Leaders: D. House/G. Diegel

### Thursday Morning Circle

Date: December 8  
Time: 10:00 a.m.  
Location: Church Parlor  
Leader: Emma Barzyk

**Sunday, December 10**—Join us for our Combined Program and Continental Breakfast in the Small Dining Room at 9 AM.

**Merry Christmas** and Best Wishes for 2012 to ALL!

**Please reserve Saturday, January 21, 2012** for the Annual Day of Renewal Service to be held at St. Peter’s, Belair Road.

**For more information** on these or any of the ministries of the *Women of the Church*, please call Emma Hahn, 410-592-8512.

## Eat Chocolate, Change Lives—

The Lutheran World Relief Divine Chocolate Project offers a variety of Fair Trade chocolate items, colorfully packaged for Advent and Christmas, to benefit communities living in poverty overseas. Visit [lwr.org/chocolate](http://lwr.org/chocolate) or call 888-294-9660, or stop by the Volunteer office to view a catalog.



**New Year’s Family Celebration** at Mar-Lu-Ridge will be Friday, December 30 through Sunday, January 1. \$85 for adults, \$65 for children 3-9, or a family-of-4-maximum of \$300 includes housing in fully heated cabins with refurbished private full baths, all meals, square dancing, campfire with marshmallow roast and songs, crafts, hiking, zip line and/or snow tubing (weather permitting) ping pong, cards, scavenger hunt, trivia contest, worship, New Year’s Eve buffet and family game night, New Year’s Day brunch and bingo, and closing worship. Mar-Lu-Ridge Conference & Educational Center is at 3200 Mar-Lu-Ridge Road, Jefferson, MD 21755, and strives to offer a mountaintop experience to change lives, make disciples, and build friendships and Christian community. Registration and more info: [www.mar-lu-ridge.org](http://www.mar-lu-ridge.org), [mlr@mar-lu-ridge.org](mailto:mlr@mar-lu-ridge.org), or 301-874-5544.

# CHURCH COUNCIL

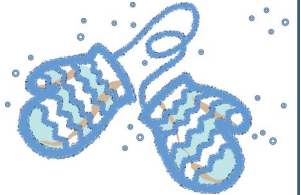
St. Michael's Congregation Council considered/acted upon the following items at its November meeting:

- Received updates from pastors and team leaders.
- Received October's Treasurer's Report showing monthly income was \$4,035 below budget while expenses were \$2,165 above budget. For the year, income is \$24,281 above budget (due to a bequest), while expenses are \$3,545 below budget.
- Approved Building Team proposal to spend up to \$5,000 (from Chapel Renovation Fund) for temporary repairs on Chapel roof to prevent further water damage.
- Approved revisions of the Employee Handbook as presented by Personnel Matters Team. Revisions become effective January 1, 2012.
- Approved 2012 budget proposal for presentation to the congregation at the November annual meeting.
- Approved spending up to \$2,600 from Long-Term Maintenance Fund for property repairs to 9530 Belair Road (Thrivent office).
- Designated \$10,000 from recent Creutzer bequest to be placed in new restricted fund for staff bonuses. This fund will be used to award bonuses as part of annual reviews.
- Discussed congregational survey to assess priorities and funding possibilities for Chapel Renovation and Organ Repair.

**Food Packing** for Christmas food boxes will be Sunday, December 11<sup>th</sup> beginning at 9:00 AM in the Fellowship Hall by Sr. FLYP and The God Squad. St. Michael Community Outreach provides 1200-1600 boxes to the hungry in our community at a cost of about \$15 per box, and we are still in need of your financial support. Please consider donating in memory or in honor of someone using the form provided with this *Messenger*. Dedications will be printed and distributed with a special insert on Christmas Eve. Help is also greatly needed for the distribution of the food boxes on Monday, December 12<sup>th</sup> from 6 to 10 AM. You do not need to be able to lift the boxes, nor do you need to stay the entire time. For more information on the food boxes, their distribution, or Community Outreach, contact George Wagner, 410-375-1481 or grwbalt@gmail.com.



**Mittens and gloves** to benefit clients served by Baltimore County DSS (Department of Social Services) Fund for Social Welfare are being collected now through December 16<sup>th</sup> at Service Coordination, 8615 Ridgley's Choice Drive, Suite 205, M-F 9 AM to 5 PM, or bring to the 5<sup>th</sup> grade Sunday School room. Info: Vanessa Blackner, vblackner@servicecoordinationinc.org or 410-256-8441.



**Thanks to Thrivent** Financial for Lutherans for donating \$500 to Community Outreach to purchase food for the Christmas baskets to be filled here at St. Michael (see article, above).



## Treasurer's Report

October, 2011	Current Month		Year to Date	
	Actual	Budget	Actual	Budget
Income	\$40,637	\$44,672	\$410,064	\$385,783
Expense	\$39,613	\$37,448	\$393,693	\$397,238
Surplus (Deficit)	\$1,024	\$7,224	\$16,370	(\$11,500)
Deficit Carryover			(\$66,893)	
Combined Deficit			(\$50,523)	

**Mar-Lu-Ridge Saturday Retreat** Series takes a winter break and resumes with "Becoming Who You Are: Exploring the Fruits of the Spirit," a Lenten retreat, with presenter Dr. Tom Williamsen, composer and pastor. Retreat is offered March 10, 2012 from 9:30 AM to 3 PM; \$30 includes lunch. Register: 1-800-238-9974 or MLR@Mar-Lu-Ridge.org.

## Our Mission and Vision

The mission of St. Michael Lutheran Church is to praise and serve God and make disciples for Jesus.

The vision of St. Michael Lutheran Church is to be a Christ-centered, welcoming community of active, compassionate, Spirit-filled disciples, working in harmony to spread the Word of God.

### The Messenger

Published monthly by  
St. Michael Lutheran Church  
9534 Belair Road  
Baltimore, MD 21236-1508  
410-256-6441 (Office)  
410-256-7081 (Fax)  
www.stmichaelperryhall.org  
office@stmichaelperryhall.org

#### SUPPORT STAFF

**Barbara A. SanBoeuf**  
Office Manager  
barbsanboeuf@stmichaelperryhall.org

**Barbara L. Harant**  
Communications Assistant  
barbharant@stmichaelperryhall.org

**Joanne Myers**  
Custodian  
jojos6@comcast.net

#### PROGRAM STAFF

**John A. Mohan**  
Lead Pastor  
pastorjohnmohan@stmichaelperryhall.org

**Bruce M. Kelley**  
Pastor  
pastorbrucekelley@stmichaelperryhall.org

**Wm. Jeffrey Bunn**  
Director of Music  
jeffbunn@stmichaelperryhall.org

#### MESSENGER STAFF

**Norma Allred**, Publisher  
**Barbara L. Harant**, Editor  
barbharant@stmichaelperryhall.org

#### COUNCIL EXECUTIVE TEAM

**Mark Ermer**, President  
m\_ermer@comcast.net

**Lara Kopf**, Vice-President  
Lara.kopf@gmail.com

**Debbie Frome**, Secretary  
rkfdbf@verizon.net

**Jim Erbe**, Treasurer  
jrerbe@yahoo.com

**Norm Zellers**, Financial Secretary  
norimarm@aol.com



**Deadline for the  
January Messenger is  
Saturday, December 10<sup>th</sup>.**



**Email Updates**  
Visit our website,  
www.stmichaelperryhall.org,  
and click "Get Email Updates!"



*St. Michael  
Lutheran Church*

9534 Belair Road  
Baltimore, MD 21236-1508  
Phone: 410-256-6441  
Fax: 410-256-7081  
E-mail: barbharant@verizon.net

**Sunday Worship:  
9 & 10:45 AM  
Sunday School: 9 AM**

**Look for us on the web:  
www.stmichaelperryhall.org**

Place label to  
completely cover this box;  
do not write below barcode